

RTP - Radar Targeting Pod ■ EL/M-20600

Sensor-to-Shooter Real Time Loop



■ TARGET ACQUISITION & FIRE CONTROL

Configured to Support the Complete “Kill Sequence” Execution

General

The EL/M 20600 RTP is a unique Radar Targeting Pod integrating High Performance Synthetic Aperture Radar (SAR) imaging, Ground Moving Target Indication (GMTI) and Precision Target Tracking. The RTP is a complete All-Weather, Autonomous Real Time System. It provides high quality radar images of ground targets and terrain from Stand-Off ranges, even through clouds, rain, fog, battlefield smoke and man-made camouflage.

The RTP incorporates ELTA's multi-year vast experience in the development and manufacturing of a variety of airborne radars including Fire Control Radar, SAR/GMTI and Multi-Mission AESA radars.

The RTP enables:

- Long Range, Wide Area Surveillance & Reconnaissance
- Detection, Classification, Precision Tracking and Targeting of Ground Targets
- Optimized Time Sensitive Targets (TST) engagement

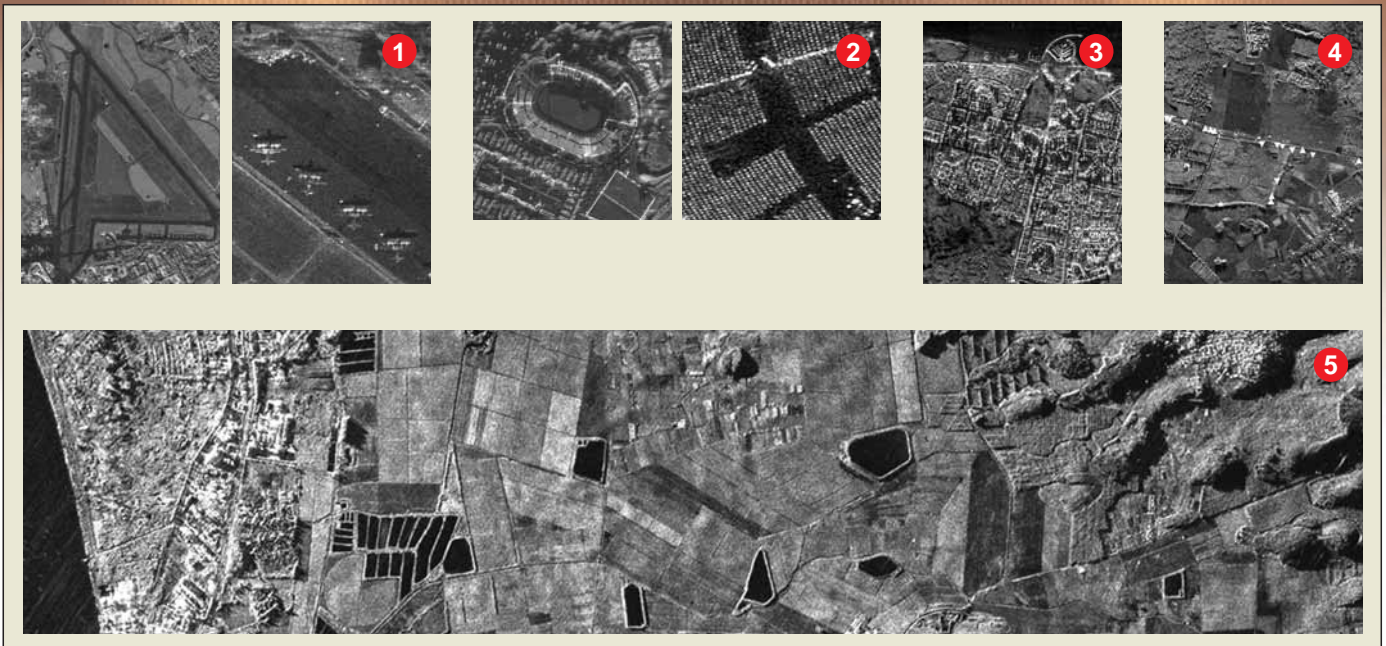
- Network Centric Warfare (NCW) support: Target data sharing and “Kill Sequence” execution
- Short Sensor-to-Shooter loop
- Accurate Geo-location data for targets
- Support of a wide variety of Air-to-Ground weapons
- Installation on board Trainers, Helicopters and various A/C

The RTP supports fighter Air-To-Surface missions:

- Real-Time Tactical/Armed Reconnaissance
- Precision Strike of Stationary & Moving Ground Targets
- Bomb Damage Assessment (BDA)

RTP - Radar Targeting Pod ■ EL/M-20600

Configured to Support the Complete "Kill Sequence" Execution



Features

- High Resolution SAR/GMTI Targeting System
- All-Weather and Limited Visibility operation
- Enhanced Situational Awareness: Wide Angular Coverage of $\pm 100^\circ$
- Powerful complement to Electro-Optical Targeting Pods
- Precise Geo-Location of fixed and moving ground targets
- Automatic Target Indication (Cueing)
- Aircrew capability to select and designate targets of interest
- Flexible mission planning and Real-time Target assessment
- Target Data Transfer via Network Centric Infrastructure
- Flexible Avionic Interfaces: 1553 MuxBus, Discrete and Video Signals
- Operational envelope: from sea level to 50,000 ft.
- Growth potential modes: Air/Air, Air/Sea and Terrain Following (TFR)

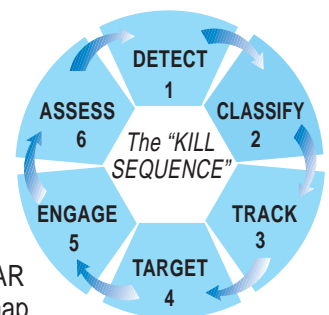
Physical Characteristics

- Length/Diameter: 220 cm / 41 cm \varnothing
- Weight: 196 kg
- Power Consumption: 4.5KW AC / 100W DC

- ① BG International Airport / Zoom-in on Transport Aircraft Parking Lot
- ② Stadium Image / Zoom-in on Stadium Seats
- ③ Urban area and coastline
- ④ GMTI on top of SAR image
- ⑤ Strip SAR

Operational Modes

- Strip SAR – Fast imaging of a wide ground surface Strip
- Spot SAR – High Resolution imaging of a ground area of interest
- GMTI – Detection & display of moving targets on top of SAR image or on a geographical map
- GTT (Ground Target Track) – Accurate tracking of stationary and moving targets of interest



www.elta-iai.com

ISRAEL Tel: (972)8-857-2312/2410. Fax: (972)8-856-1872
 E-mail: market@elta.co.il
 U.S.A. Tel: (703)875-3726. Fax: (703)875-3770
 EUROPE Tel: (33)1-46.40.47.47. Fax: (33)1-46.40.47.48.

The contents of this brochure are presented as general information only and are not meant to, nor do they, constitute any representation or warranty by ELTA Systems Ltd. The contents are not meant to serve or be used in substitution for the information contained in any approved specification, manual or the like issued by ELTA Systems Ltd. The contents shall not in any way add to, amend, delete or change any term of any contract in which ELTA Systems Ltd. is a party.

 **ELTA Systems Ltd.**
 Group & Subsidiary of ISRAEL AEROSPACE INDUSTRIES LTD.
Innovation. Solutions. Control.

www.elta-iai.com • E-mail: market@elta.co.il